

LIGHT HOUSE 1

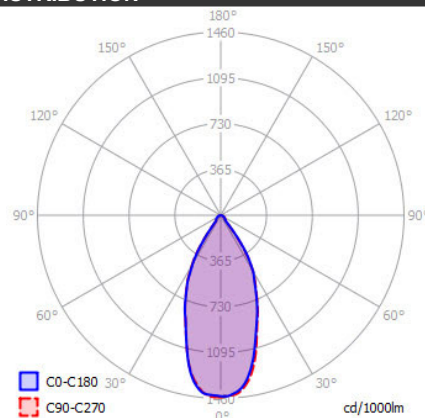
SPECIFICATIONS

MOUNTING		CEILING
POWER	[W]	9,3
LAMP		built-in LED
LUMINOUS FLUX*	[lm]	860
LIGHT COLOUR	[K]	2700
CRI		>90
BEAM ANGLE	[°]	32
AVERAGE LIFETIME	[h]	L80/B50.000
LUMINOUS EFFICACY	[lm/W]	92
POWER SUPPLY		220-240V AC 50/60 Hz
LED-DRIVER		INCLUDED
DIMMING		PHASE DIM
THROUGH-WIRING		YES
MATERIAL		ALUMINUM
INGRESS PROTECTION		IP20
PROTECTION CLASS		I
NET WEIGHT	[kg]	1,02
GROSS WEIGHT	[kg]	1,05
COLOUR (HOUSING)		WHITE ~RAL9003
COLOUR (HOUSING)		BLACK ~RAL9005



LIGHT DISTRIBUTION

32°



*Luminous flux values are nominal LED data at a operating temperature of 25° C

OPTIONS / OPTIONAL ACCESSORIES

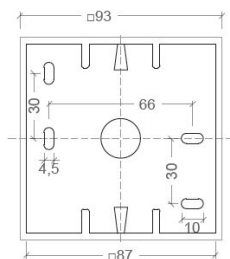
Colours



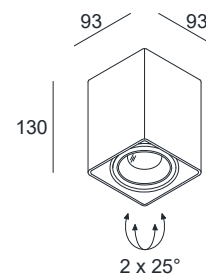
white

black

MOUNTING DIMENSIONS (DRILLING TEMPLATE)



FIXTURE DIMENSIONS



CRI>90



IP20

DLS LIGHTING

www.dslighting.com

***DLS**
LIGHTING