

# LIGHT BOX SOFT 2

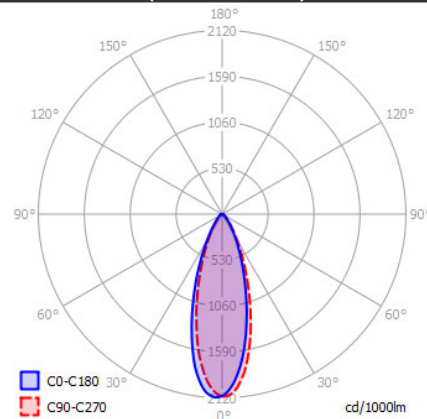
## SPECIFICATIONS

|                    |         |                      |
|--------------------|---------|----------------------|
| MOUNTING           |         | CEILING              |
| POWER              | [W]     | 2xGU10 LED           |
| LAMP               |         | NOT INCLUDED         |
| LUMINOUS FLUX*     | [lm]    | -                    |
| LIGHT COLOUR       | [K]     | -                    |
| CRI                |         | -                    |
| BEAM ANGLE         | [°]     | -                    |
| AVERAGE LIFETIME   | [h]     | -                    |
| LUMINOUS EFFICACY  | [lm/W]  | -                    |
| POWER SUPPLY       | [V] [A] | 220-240V AC 50/60 Hz |
| LED-DRIVER         |         | -                    |
| DIMMING            |         | SEE LAMP             |
| THROUGH-WIRING     |         | NO                   |
| MATERIAL           |         | ALUMINUM             |
| INGRESS PROTECTION |         | IP20                 |
| PROTECTION CLASS   |         | I                    |
| NET WEIGHT         | [kg]    | 1,27                 |
| GROSS WEIGHT       | [kg]    | 1,30                 |
| COLOUR (HOUSING)   |         | WHITE ~RAL9003       |
| COLOUR (HOUSING)   |         | BLACK ~RAL9005       |



## LIGHT DISTRIBUTION (OSRAM LAMP)

36°



\*Luminous flux values are nominal LED data at a operating temperature of 25° C

## OPTIONS / OPTIONAL ACCESSORIES

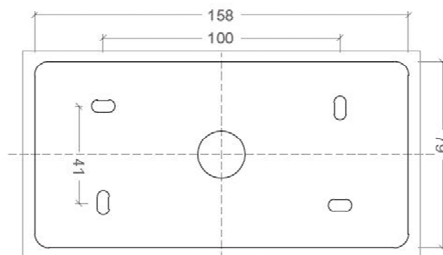
## Colours



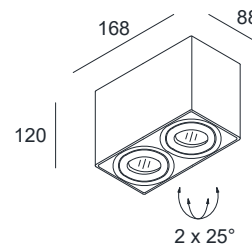
white

black

## MOUNTING DIMENSIONS



## FIXTURE DIMENSIONS



DLS LIGHTING

www.dslighting.com

**\*DLS**  
LIGHTING